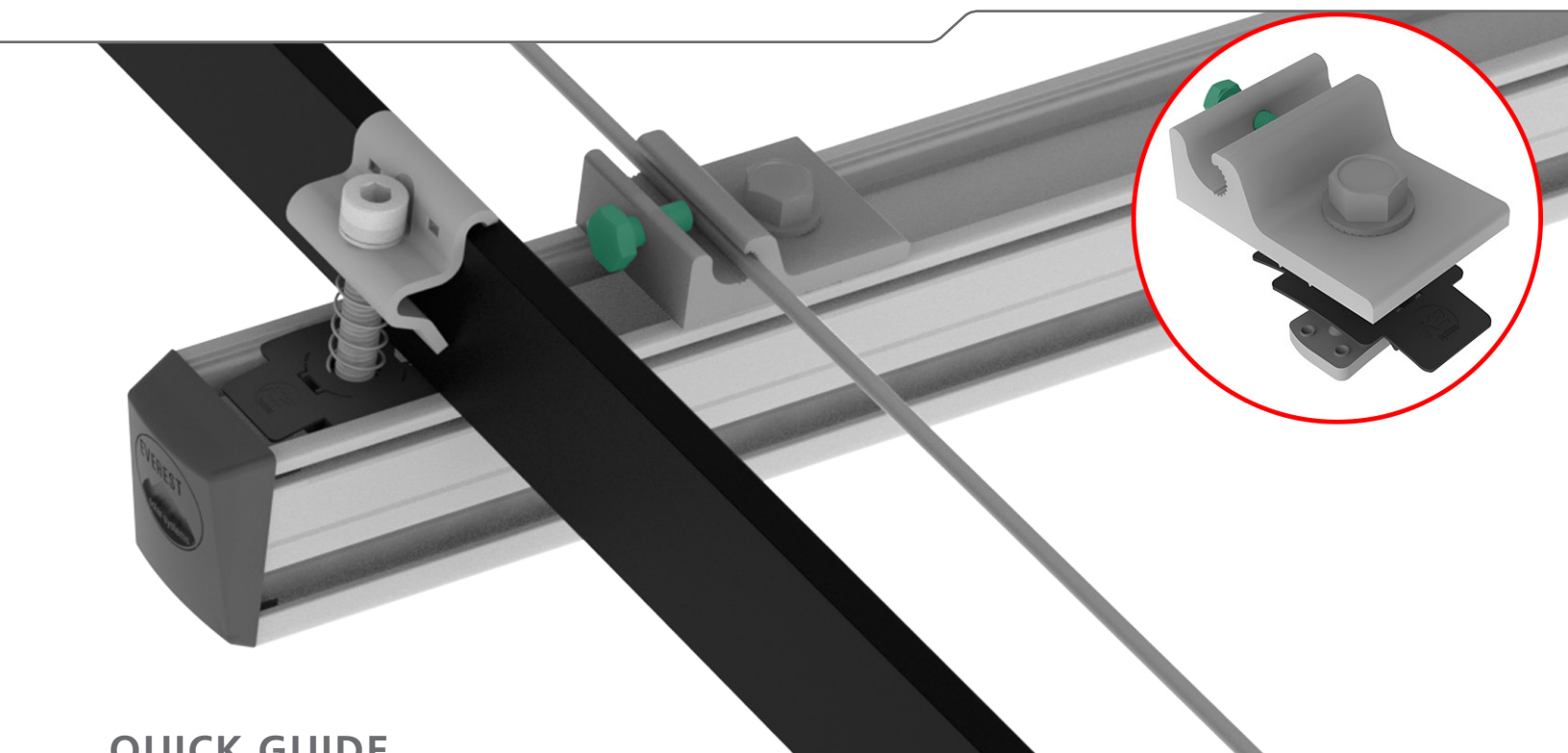


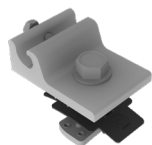


# Mounting systems for solar technology



## QUICK GUIDE

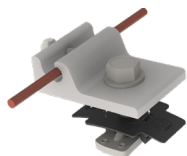
# Everest Ground Lug



Everest Ground Lug Set

| 400006-H

Material: Tin-plated aluminum with stainless steel hardware



Copper Wire

#6 or #8 AWG solid copper wire

## TOOLS REQUIRED



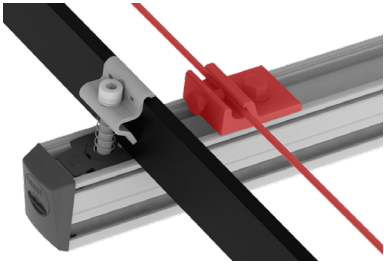
10-50 ft-lb  
(6-35Nm)



13 mm dep socket  
▶ Torque 10 ft-lbs



7/16" socket  
▶ Torque 35-60 in-lbs

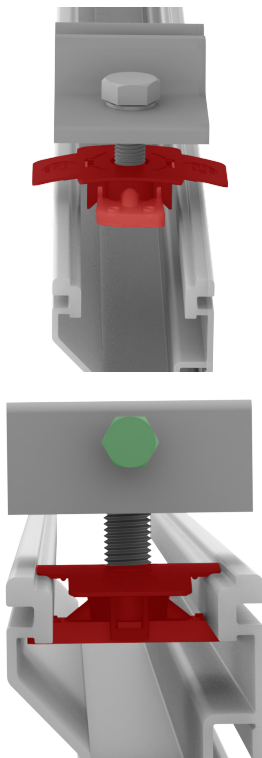


## IMPORTANT NOTE

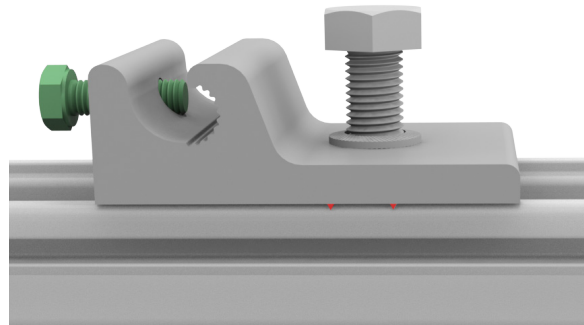
CrossRail components are required to be electrically bonded and grounded via the Everest Ground Lug or Burndy's WEEB Lug 10 and the use of #6 or #8 AWG solid copper wire. A minimum of one lug is required per each independent row of modules. The Everest Ground Lug must be attached to the top channel of CrossRail, as shown.

# Assembly

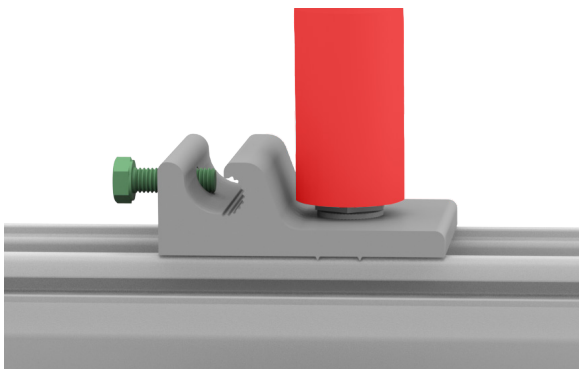
## 1 ATTACH GROUND LUG



To attach the Everest Ground Lug, insert the MK3 slot nut of the pre-assembled ground lug into the top channel of the CrossRail. While slightly lifting the plastic tabs, rotate 90 degrees clockwise to engage the MK3 into the channel. Ensure the bonding teeth are perpendicular to the rail channel.

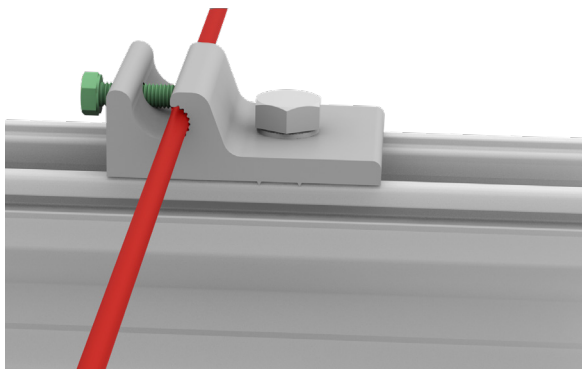


## 2 SECURE GROUND LUG



Torque the M8 bolt to 10 ft-lbs using a 13 mm deep socket wrench.

### 3 INSERT COPPER WIRE



Insert a #6 or #8 AWG solid copper wire and tighten terminal screw to 35 - 60 in-lb using a 7/16" socket.