

Mounting systems for solar technology



# Everest Solar Systems

## Mounting Systems Solutions



### NEW

- ▶ D Dome R<sup>2</sup> System for commercial flat roofs [left image and page 8]
- ▶ MiniRail XPress for trapezoidal metal roofs [page 7]

## TABLE OF CONTENTS

Introduction	2
CrossRail 48-X/48-S/48/80	3
CrossRail Shared Rail	4
CrossRail Tilt Up	5
CrossRail Ground Mount	6
MiniRail XPress	7
D Dome R <sup>2</sup>	8
Roof Attachments	9
Notes	10



# Mounting systems for solar technology

## Everest Solar Systems

Everest Solar Systems is dedicated to advancing solar energy installations throughout the Americas by offering cutting edge mounting systems for solar technology. The company is a member of K2 Systems International Group, which continues to improve its broad portfolio of industry-leading technologies and mounting solutions for residential, commercial, and utility scale solar deployments.

The mission of Everest Solar Systems, following K2's success in Europe, is to offer innovative mounting solutions to our customers backed by world class quality, engineering and customer support. Based in Oceanside, California, the company will support the Americas' long term market development with a broad set of capabilities including local product development, sales, applications, project services, manufacturing and sourcing operations.

## ONLINE DESIGN TOOL

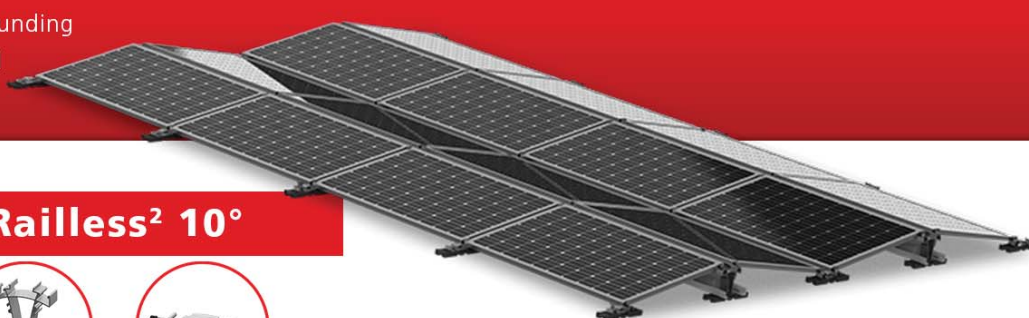
Available for D Dome Railless, CrossRail, CrossRail Tilt Up and XPressRail

- ▶ Design your system
- ▶ Calculate ballast
- ▶ Generate bill of materials (BOM)




### Everest Solar Systems

#### D Dome Railless<sup>2</sup> System for flat roofs

- ▶ Double-sided low ballast system
- ▶ Low component count
- ▶ Modular components
- ▶ Integrated grounding
- ▶ UL 2703 Listed



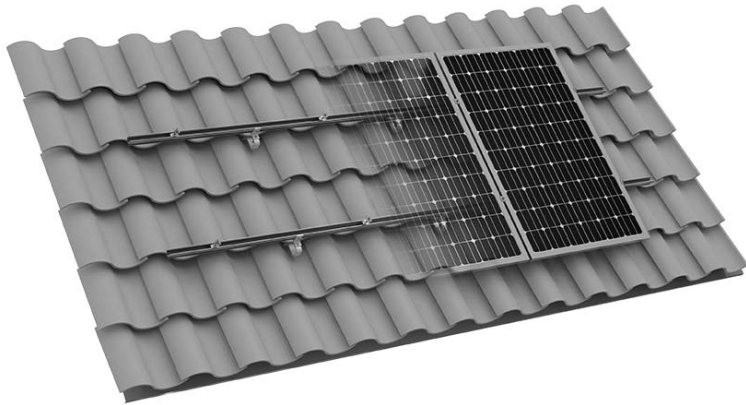
#### D Dome Railless<sup>2</sup> 10°



D Dome R<sup>2</sup> System      Dome Peak R<sup>2</sup>      Dome Base R<sup>2</sup>



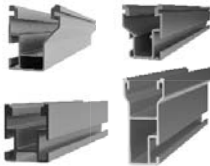
# Mounting systems for solar technology



## CrossRail (Dual Rail):

*Patent Pending*

- ▶ Pre-assembled Universal Bonding Clamps
- ▶ Spring loaded, self-standing clamps
- ▶ Structural bonding splice
- ▶ Integrated wire management
- ▶ Quality, robust components, all at a competitive price



### CrossRail 48-X/48-S/48/80

Material: aluminum  
Finish: mill, dark anodized



### Burndy WEEB Lug 8.0 + Hardware Or Burndy WEEB Lug 10.3 + Hardware

WEEB Lug Material: tin plated copper  
Hardware: stainless steel



### Rail Connector Set

CR 48/80  
Material: aluminum  
Finish: mill, dark anodized  
Hardware: stainless steel



### L-Foot with Hardware

Material: aluminum  
Finish: mill, dark anodized  
Hardware: stainless steel



### Structural Rail Connector Set

CR 48-X/48-S  
Material: aluminum  
Finish: mill, dark anodized  
Hardware: stainless steel



### Climber Set CR48-X/48-S/48/80, Hole

Material: aluminum  
Finish: mill  
Hardware: stainless steel



### CrossRail Mid Clamp UL2703+ Set

30 - 47 mm  
Material: stainless steel  
Finish: silver, dark



### Micro Inverter and Optimizer Mounting Kit

Material: stainless steel



### CrossRail End Clamp Set

30 - 50 mm  
Material: stainless steel  
Finish: silver, dark



### 3S Tile Hook

Material: aluminum  
Finish: mill



### CrossRail End Cap 48-X/48-S/48/80

CR 48 Shown  
Material: glass fiber reinforced polyamide  
Finish: dark



### SingleHook

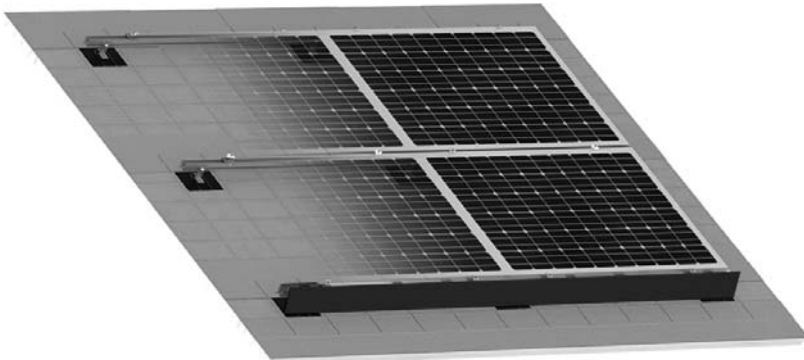
Material: aluminum  
Finish: mill

## CROSSRAIL FOR PITCHED ROOFS





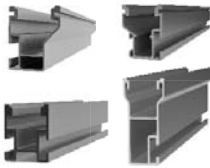
# Mounting systems for solar technology



## CrossRail Shared Rail:

*Patent Pending*

- ▶ Lowest total material cost
  - Up to 30% less material cost
  - Up to 30% fewer attachments and/or flashing
  - One lug per sub-array
- ▶ Fastest installation time
- ▶ Structural bonding splice



### CrossRail 48-X/48-S/48/80

Material: aluminum  
Finish: mill, dark anodized



### Burndy WEEB Lug 8.0 + Hardware Or Burndy WEEB Lug 10.3 + Hardware

WEEB Lug Material: tin plated copper  
Hardware: stainless steel



### Rail Connector Set

CR 48/80  
Material: aluminum  
Finish: mill, dark anodized  
Hardware: stainless steel



### L-Foot with Hardware

Material: aluminum  
Finish: mill, dark anodized  
Hardware: stainless steel



### Structural Rail Connector Set

CR 48-X/48-S  
Material: aluminum  
Finish: mill, dark anodized  
Hardware: stainless steel



### Array Skirt

Material: aluminum  
Finish: dark



### Shared Rail UL2703+ Mid Clamp Set

30 - 50 mm  
Material: stainless steel  
Finish: silver, dark



### Micro Inverter and Optimizer Mounting Kit

Material: stainless steel



### Shared Rail End Clamp Set

30 - 50 mm  
Material: stainless steel  
Finish: silver, dark



### EverFlash eComp +Slider Kit

with EcoFasten Watertight Technology  
Material: aluminum, stainless steel  
Finish: mill



### CrossRail End Cap 48-X/48-S/48/80

CR 48 Shown  
Material: glass fiber reinforced polyamide  
Finish: dark



### EverFlash qComp +Slider Kit

with Quick Mount PV Water Seal Technology  
Material: aluminum, stainless steel  
Finish: mill





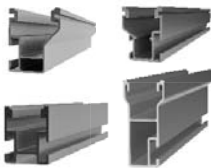
# Mounting systems for solar technology



## CrossRail Tilt Up:

*Patent Pending*

- ▶ Fast, simple installation
  - No drilling, no bonding jumpers
  - Pre-assembled clamps with integrated bonding
- ▶ Reduce rail waste
  - Use existing rail for tilt legs
  - Design flexibility
- ▶ Pre-assembled for 7, 10 and 15 degree tilt angles
- ▶ Structural bonding splice



### CrossRail 48-X/48-S/48/80

Material: aluminum  
Finish: mill, dark anodized



### Burndy WEEB Lug 8.0 + Hardware Or Burndy WEEB Lug 10.3 + Hardware

WEEB Lug Material: tin plated copper  
Hardware: stainless steel



### Rail Connector Set

CR 48/80  
Material: aluminum  
Finish: mill, dark anodized  
Hardware: stainless steel



### L-Foot with Hardware

Material: aluminum  
Finish: mill, dark anodized  
Hardware: stainless steel



### Structural Rail Connector Set

CR 48-X/48-S  
Material: aluminum  
Finish: mill, dark anodized  
Hardware: stainless steel



### Micro Inverter and Optimizer Mounting Kit

Material: stainless steel



### CrossRail Mid Clamp UL2703+ Set

30 - 47 mm  
Material: stainless steel  
Finish: silver, dark



### Climber Set CR48-X/48-S/48/80, Hole

Material: aluminum  
Finish: mill  
Hardware: stainless steel



### CrossRail End Clamp Set

30 - 50 mm  
Material: stainless steel  
Finish: silver, dark



### Tilt Connector Set

Material: aluminum, stainless steel  
Finish: mill  
Hardware: stainless steel



### CrossRail End Cap 48-X/48-S/48/80

CR 48 Shown  
Material: glass fiber reinforced polyamide  
Finish: dark

**CROSSRAIL TILT UP FOR FLAT, LOW AND STEEP SLOPE ROOFS**





# Mounting systems for solar technology



## CrossRail Ground Mount:

### Patent Pending

- ▶ Pre-engineered system
  - 4 rows in landscape
  - 20-35 degree tilt
  - 0-50 lbs snow, 100 130 mph wind
- ▶ Uses Everest CrossRail 80 and L Bracket Kit on standard 1.5 - 2.0" pipe and Hollaender connections



**CrossRail 80**  
Material: aluminum  
Finish: mill, dark anodized



**M10 Serrated Flange Nut and T-Bolt 28/15 M10**  
Material: stainless steel



**Rail Connector Set**  
CR 80  
Material: aluminum  
Finish: mill, dark anodized  
Hardware: stainless steel



**Hollaender No. 70 External Coupling**  
Material: aluminum



**CrossRail Mid Clamp UL2703+ Set**  
30 - 47 mm  
Material: stainless steel  
Finish: silver, dark



**Hollaender 5 EXT Extended Barrel Tee**  
OR



**CrossRail End Clamp Set**  
30 - 50 mm  
Material: stainless steel  
Finish: silver, dark



**Hollaender 5 EX**  
Material: aluminum



**Everest Pipe L Bracket Kit**  
Material: stainless steel, galvanized steel  
Finish: mill



**Hollaender 17E Adj. Elbow**  
OR  
**Tee-E Assembly + Hollaender 17 Adjustable Elbow or Tee Assembly**  
OR  
**Hollaender 17x-9 Adjustable Elbow or Tee Assembly**  
Material: aluminum

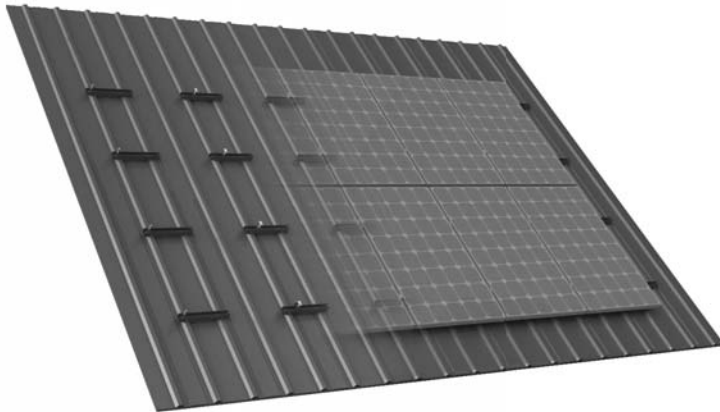


**1/4" - 20 x 1 1/2" LG. HWH Tek 4 Screws**  
Material: stainless steel





# Mounting systems for solar technology



## MiniRail XPRESS:

*Patent Pending*

- ▶ High quality, German engineering
- ▶ UL 2703 Listed for bonding and fire
- ▶ Fast, simple installation
- ▶ Pre-assembled clamps with integrated bonding
- ▶ Quality, robust components, all at a competitive price



### MiniRail XPRESS Base

17 inch sections  
 Material: aluminum, EPDM-backing  
 Finish: mill



### Burndy WEEB Lug 6.7 + Hardware

WEEB Lug Material: tin plated copper  
 Hardware: stainless steel



### CrossRail Mid Clamp UL2703+ Set

30 - 47 mm  
 Material: stainless steel  
 Finish: silver, dark



### ILSCO Lug

Material: tin plated aluminum  
 Finish: mill  
 Hardware: stainless steel



### CrossRail End Clamp Set

30 - 50 mm  
 Material: stainless steel  
 Finish: silver, dark



### Micro Inverter and Optimizer Mounting Kit

Material: stainless steel



### JT3 Self-Tapping Screw 6x36

Minimum of 26 gauge metal roof  
 Material: stainless steel  
 Sealing: EPDM washer  
 Wrench Size: 8 mm



### JT3 Self-Tapping Screw 6x42

Minimum of 26 gauge metal roof  
 Material: stainless steel  
 Sealing: EPDM washer  
 Wrench Size: 8 mm



### JT3 Self-Tapping Screw 6x32

Minimum of 29 gauge metal roof  
 Material: stainless steel  
 Sealing: EPDM washer  
 Wrench Size: 8 mm

## MINIRAIL XPRESS FOR TRAPEZOIDAL METAL ROOFS





# Mounting systems for solar technology



## D Dome Railless<sup>2</sup>:

*Patent Pending*

- ▶ Innovative 10 degree, double-sided, low ballast system designed for East/ West orientation
- ▶ Fast, simple installation
- ▶ Aerodynamic optimization enables minimal ballast - Wind tunnel tested by leading structural aerodynamics lab
- ▶ SEAOC PV1 and PV2 Compliant
- ▶ Designed with thermal expansion features



### Dome Peak R<sup>2</sup> with Roof Protection Mat

Material: aluminum, recycled rubber

Finish: mill



### ILSCO LUG SGB-4

Material: tin plated copper

Hardware: stainless steel



### Dome Base R<sup>2</sup> with Roof Protection Mat

Material: aluminum, recycled rubber

Finish: mill



### Micro Inverter and Optimizer Mounting Kit

Material: stainless steel



### Aluminum End Clamp Set with WEEB BMC

Material: aluminum

Finish: mill

Hardware: stainless steel



### Dome Coner Strut R<sup>2</sup>

Material: aluminum

Finish: mill

Hardware: stainless steel



### Dome-XR Mid Clamp Set

Material: stainless steel

Finish: silver



### Dome Porter R<sup>2</sup>

Material: aluminum

Finish: mill



### Roof Protection Mat R<sup>2</sup>

Material: recycled rubber

Finish: dark

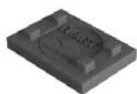


### OMG PowerGrip Plus with Porter Bracket

OMG supplied by customer, only for anchoring

Material: aluminum

Hardware: stainless steel



### Roof Spacer Mat R<sup>2</sup>

Material: recycled rubber

Finish: dark



### Eco Fasten Eco65 with Porter Bracket

Eco Fasten supplied by customer, only for anchoring

Material: aluminum

Hardware: stainless steel

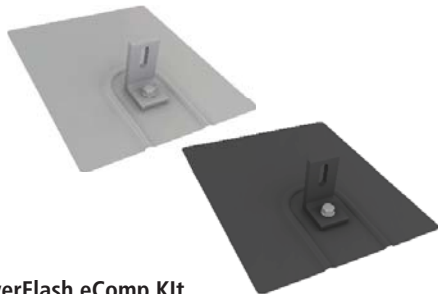






# Mounting systems for solar technology

## Roof Attachments for Comp and Tile Roofs:



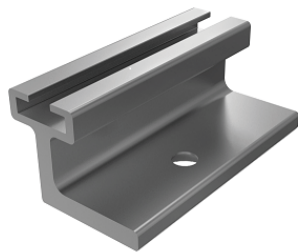
EverFlash eComp Kit  
with EcoFasten Watertight Technology

### EverFlash Flashing:

- ▶ Reduce the chance of water intrusion
- ▶ Available in mill or dark
- ▶ Compatible with CrossRail System
- ▶ L-Foot with EPDM washer



EverFlash qComp Kit  
with Quick Mount PV Water Seal Technology



### Slide Bracket:

- ▶ Paired with either EverFlash eComp or qComp Kits
- ▶ Designed for CrossRail Shared Rail System
- ▶ T-Bolt channel allows for quick installation
- ▶ Provides up to 4 inches of N/S adjustability of L-Foot and rail



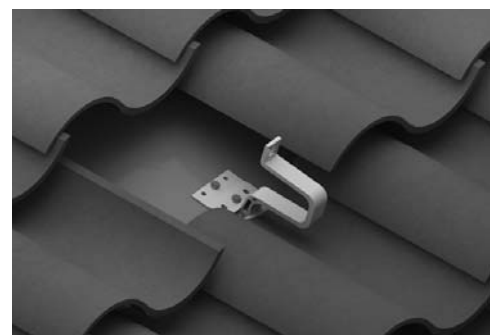
### 3S Tile Hook:

- ▶ Patented base allows for elevation adjustability
- ▶ Compatible with CrossRail System
- ▶ Fits most common tile roofs including curved S tile roofs
- ▶ Attach to Everest CrossRail with Everest Standard L-Foot and Climber

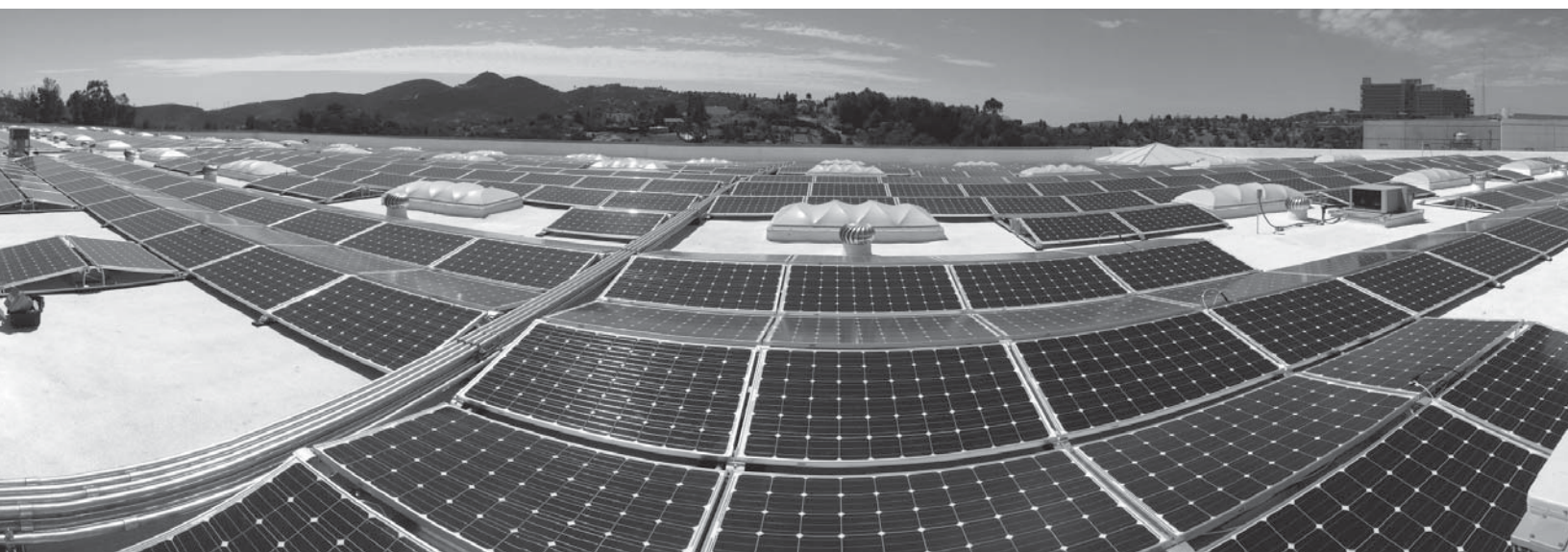


### Single Hook:

- ▶ Simple, fast installation with minimal components; no L-Foot needed
- ▶ Compatible with CrossRail System
- ▶ Fits most common curved S tile roofs
- ▶ Slotted hole allows for flexibility in elevation of rail



# Mounting systems for solar technology



**INNOVATION - QUALITY - DURABILITY - SERVICE - SUPPORT**

Everest Solar Systems, LLC  
3809 Ocean Ranch Blvd.  
Suite 111  
Oceanside, CA 92056  
Tel. +1.760.301.5300  
[info@everest-solarsystems.com](mailto:info@everest-solarsystems.com)  
[www.everest-solarsystems.com](http://www.everest-solarsystems.com)