

QUICK GUIDE

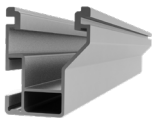
CrossRail 48-X/48-XL Sleeve



CrossRail 48-X/48-XL 3" Sleeve

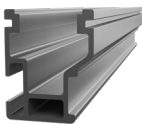
Material: UV Resistant Black PVC

Part Number	Description
4000583	CrossRail 3" Black Sleeve 48-X,48-XL



CrossRail 48-X/48-XL

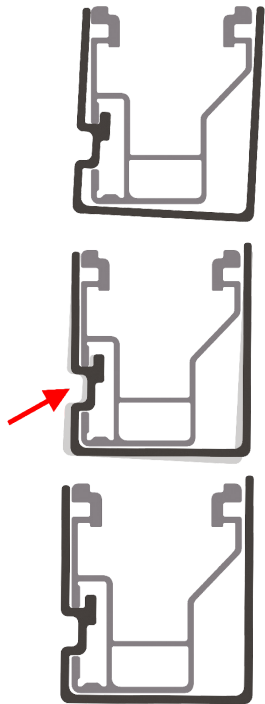
Material: Aluminum



Part Number	Description
4000662	CrossRail 48-X 166", Mill
4000663	CrossRail 48-X 166", Dark
4000675	CrossRail 48-X 175", Mill
4000695	CrossRail 48-XL 166", Mill
4000705	CrossRail 48-XL 166", Dark

Assembly

1 SNAP INTO PLACE

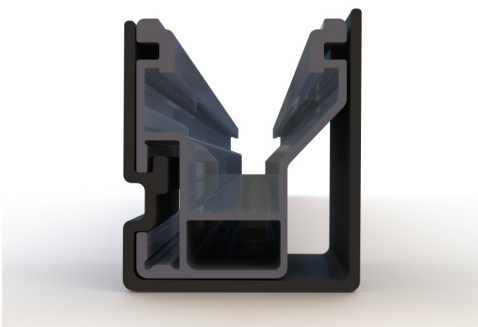


To snap the CrossRail Sleeve on CrossRail, first place the CrossRail Sleeve over the rail with the T-Bolt Key on the T-Bolt Channel.

Once the CrossRail Sleeve is in the correct position, place your hand over the top of the rail with fingers in the groove of the CrossRail Sleeve.

Slowly push in on the groove while pulling up. You should hear a snap indicating the CrossRail Sleeve has been attached fully.

2 SLIDE INTO PLACE



To slide the CrossRail Sleeve on CrossRail, first align the CrossRail Sleeve to the end of the rail.

The CrossRail Sleeve must slide over the end of the rail. Ensure the T-Bolt Key is fully seated within the T-Bolt Channel.