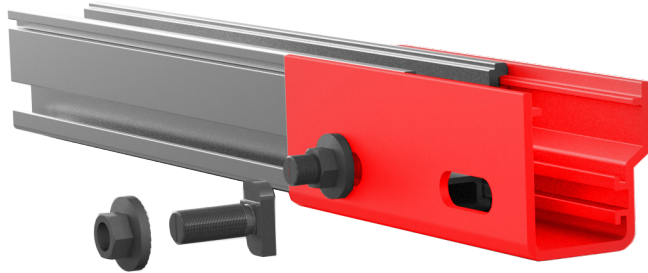


Mounting systems for solar technology



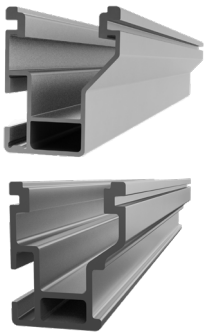
CrossRail 48-X / 48-XL Rail Connector:

- ▶ Structural properties
- ▶ One splice connects CrossRail 48-X and CrossRail 48-XL
- ▶ Uses 2 T-bolts

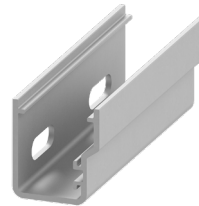
QUICK GUIDE

4000386 Rail Connector CR 48-X/48-XL

CROSSRAIL 48-X/48-XL RAIL CONNECTOR



CrossRail 48-X / 48-XL
Material: Aluminum



CrossRail 48-X / 48-XL Rail Connector
Material: Aluminum
Hardware: Stainless Steel

INSTALLATION OF CROSSRAIL 48-X AND 48-XL RAIL CONNECTOR: STEP BY STEP

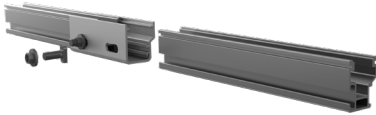


1
of 3

INSERT RAIL CONNECTOR

Slide the rail connector onto CrossRail 48-X or 48-XL

The rail connector contains mating features and must be inserted prior to aligning the rails together.



2
of 3

ALIGN RAILS

Align the two rail ends next to each other and center the rail connector between the two rails.

Note: CrossRail 48-XL pictured.



3
of 3

CONNECT THE RAILS

Attach the rail connector using two M10 T-Bolts (use bonding T-Bolts with dark rail) and two hex nuts.

Ensure that the slot on the bottom of the T-Bolt is vertical, indicating that the T-Bolt head is properly engaged in the rail channel.

Torque M10 serrated hex nuts to 25.8 ft-lbs (35 Nm)

Note: Please refer to the system and state-specific engineering letters for allowable spans, limitations and installation notes regarding the capabilities of CrossRail 48-X or 48-XL and the CrossRail 48-X / 48-XL Rail Connector.

Note: CrossRail 48-XL pictured.

Ready!

THANK YOU FOR CHOOSING AN EVEREST SOLAR SYSTEMS MOUNTING SYSTEM.