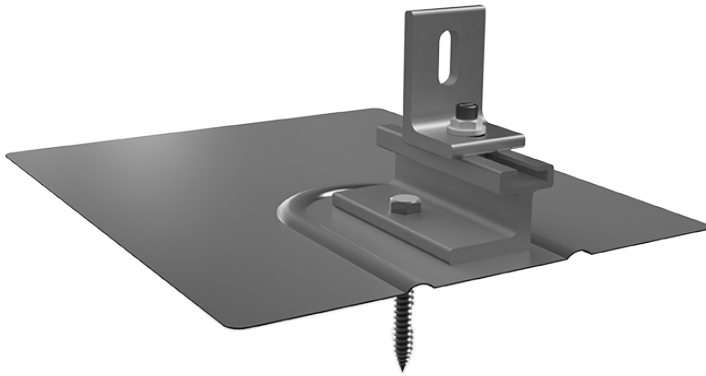


Mounting systems for solar technology

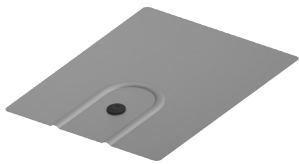


EverFlash eComp + Slide Kit

- ▶ Fast, simple installation
- ▶ Minimal component count resulting in low total installed cost
- ▶ Compatible with CrossRail Shared Rail System
- ▶ Fits most composition shingle roof types

EVEREST SOLAR SYSTEMS EVERFLASH eCOMP + SLIDE KIT COMP SHINGLE ROOF ATTACHMENT

4000591 | EverFlash eComp + SR Slide Kit, 10X12", Mill



EverFlash eComp Flashing, 10X12"

Material: aluminum
Finish: mill



EverFlash L-Foot and Hardware

Material: aluminum and stainless steel
Finish: mill



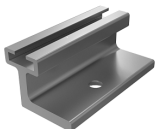
5/16" Sealing Washer

Material: stainless steel, EPDM insert



5/16" Lag Bolt

Material: stainless steel



Slide Kit

Material: aluminum

TOOLS REQUIRED

- ▶ Torque wrench (0 – 50 ft-lb)
- ▶ Cordless drill (non-impact)
- ▶ 1/4" drill bit
- ▶ 1/2" socket (for lag bolt)
- ▶ Measuring tape
- ▶ String line
- ▶ Roofing bar
- ▶ Sealant

TORQUE SPECIFICATIONS

- ▶ Range between 8.3 - 11.6 ft-lb

Contractor is solely responsible for work safety and prevention regulations and corresponding standards and regulations of the applicable occupational safety and health agency are followed. Please see full safety guidelines on the Everest Solar website at <http://www.everest-solarsystems.com/>

INSTALLATION OF EVERFLASH eCOMP + SLIDE KIT: STEP BY STEP

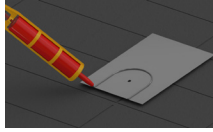


1
of 7

PREPARE ROOF FOR EVERFLASH eCOMP

Locate the rafters and snap horizontal and vertical lines (measured according to CrossRail Shared Rail Assembly Instructions) to mark the installation position for each EverFlash eComp flashing.

Materials Required: Measuring tape, string line

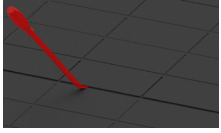


5
of 7

OPTIONAL: APPLY SEALANT TO UNDERSIDE OF FLASHING

Apply an upside-down U-shape bead of sealant to the underside of the flashing before insertion.

Materials Required: EverFlash eComp flashing, appropriate sealant



2
of 7

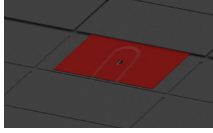
USE ROOFING BAR TO BREAK SEALS

It is important to remove any obstructing nails in the 2nd course of shingles as they can prevent the flashing from extending up under the 3rd course of shingles.

This is required by the roofing manufacturer's instructions and warranties, and the Asphalt Roofing Manufacturer's Association guidelines.

Use roofing bar to break the seals between the 1st and 2nd, and 2nd and 3rd shingle courses. Be sure to remove all nails to allow correct placement of flashing.

Materials Required: Roofing bar

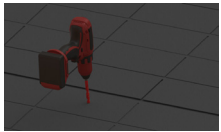


6
of 7

INSERT EVERFLASH eCOMP FLASHING

Slide the eComp flashing under the 2nd course of shingles so that the bottom flashing edge does not overhang the butt edge of the shingles. This requirement ensures that the flashing extends up under the 3rd course of shingles and the minimum head-lap is achieved.

Materials Required: EverFlash eComp flashing

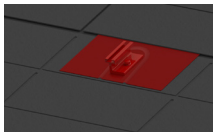


3
of 7

DRILL A PILOT HOLE INTO RAFTER

Drill a 1/4" pilot hole by drilling square to the rafter using a 1/4" drill bit.

Materials Required: 1/4" drill bit, drill



7
of 7

INSTALL eCOMP SLIDE KIT

Line Shared Rail Slide Kit pilot hole with EverFlash flashing hole. Insert the lag bolt through Slide Kit, EverFlash eComp flashing and into the rafter.

Torque: The range is between 8.3-11.6 ft-lb depending on the type of wood and time of year. If using an impact wrench to install the fasteners, be careful not to over-torque the fastener. You may need to stop and use a ratchet to finish the install.

Note: We recommend the use of the Slide Kit for a CrossRail Shared Rail system to adjust rail alignment during module installation.

Refer to CrossRail Shared Rail Assembly Instructions to finish system install.

Materials Required: EverFlash eComp Kit, Slide Kit, drill, 1/2" socket, torque wrench



4
of 7

FILL PILOT HOLE WITH APPROPRIATE SEALANT

Filling the pilot hole with sealant is a secondary waterproofing step, which is required by the roofing manufacturers.

Materials Required: Appropriate sealant

Ready!

THANK YOU FOR CHOOSING AN EVEREST SOLAR SYSTEMS MOUNTING SYSTEM.

The EverFlash + Slide Kit is simple and fast to install. Please contact us for further assistance:

SERVICE-HOTLINE +1.760.301.5300

Everest Solar Systems, LLC
3809 Ocean Ranch Blvd.
Suite 111
Oceanside, CA 92056
Tel. +1.760.301.5300
info@everest-solarsystems.com
www.everest-solarsystems.com

EverFlash eComp + Slide Kit Quick Guide US1-0417
Product images are for illustrative purposes only. Specifications are subject to change without notice. All sales of our products shall be subject to Everest Solar Systems terms and conditions, including the exclusive limited warranty set forth therein.