

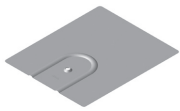


Mounting systems for solar technology



EverFlash Comp Shingle Roof Attachment

- High quality, patented design to ensure a watertight seal
- Included as part of a UL 2703 Listed System
- Easy installation, can be retrofitted without removing shingles
- Meets or exceeds all known building codes



EverFlash Flashing, 10" x 12"

Material: aluminum
Finish: mill, dark



EverFlash L-Foot and Hardware

Material: aluminum
Finish: mill, dark



5/16" Sealing Washer

Material: stainless steel, EPDM insert



5/16" Lag Bolt

Material: stainless steel

Technical Data:

Roof type	Composition shingle
Material	Aluminum and stainless steel for high corrosion resistance
Finish	Mill or dark anodized
Roof Connection	5/16" lag bolt
Code Compliance	UL 2703, IAPMO Certified
Warranty	20 years
Compatibility	CrossRail 48, 48-X, 48-XL, 80

Part Number	Description
4000367	EverFlash Comp Kit, 10 X 12 Mil
4000366	EverFlash Comp Kit, 10 X 12 Black

**REVISION 2 DMA
11/26/18**



UL 2703 Listed System

Everest Solar Systems, LLC
2835 La Mirada Dr. Suite A
Vista, CA 92081
Tel. +1.760.301.5300
info@everest-solarsystems.com
www.everest-solarsystems.com