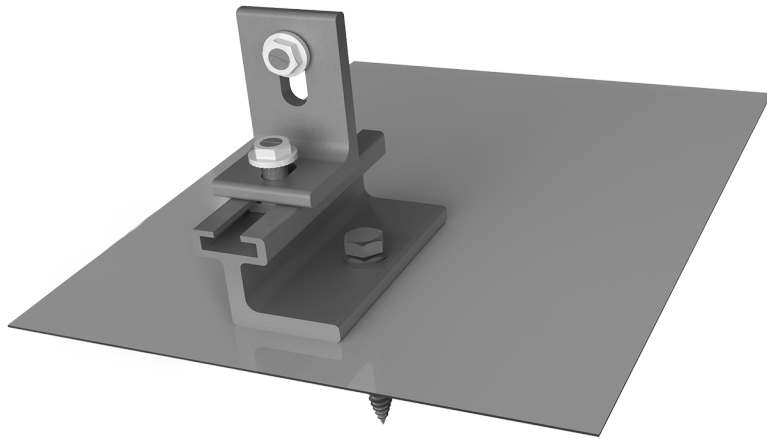


Mounting systems for solar technology



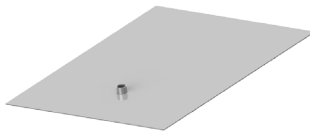
EverFlash qComp + Slide Kit

With Quick Mount PV® Elevated Water Seal Technology™

- ▶ Fast, simple installation
- ▶ Minimal component count resulting in low total installed cost
- ▶ Fused flute raised 0.3" above the metal flashing to prevent water intrusion
- ▶ Compatible with CrossRail Shared Rail System
- ▶ Fits most composition shingle roof types

EVEREST SOLAR SYSTEMS EVERFLASH qCOMP + SLIDE KIT COMP SHINGLE ROOF ATTACHMENT

4000625 | EverFlash qComp + Slide Kit, 9X12", Mill



EverFlash qComp Flashing, 9X12"

Material: aluminum
Finish: mill, dark



EverFlash L-Foot and Hardware

Material: aluminum and stainless steel
Finish: mill, dark



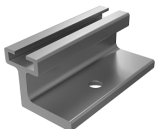
5/16" Sealing Washer

Material: stainless steel, EPDM insert



5/16" Lag Bolt

Material: stainless steel



Slide Kit

Material: aluminum

TOOLS REQUIRED

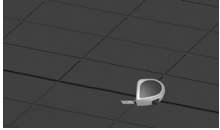
- ▶ Torque wrench (0 – 50 ft-lb)
- ▶ Cordless drill (non-impact)
- ▶ 7/32" aircraft extension drill bit
- ▶ 1/2" socket (for lag bolt)
- ▶ Measuring tape
- ▶ String line
- ▶ Roofing bar
- ▶ Sealant

TORQUE SPECIFICATIONS

- ▶ Range between 8.3 - 11.6 ft-lb

Contractor is solely responsible for work safety and prevention regulations and corresponding standards and regulations of the applicable occupational safety and health agency are followed. Please see full safety guidelines on the Everest Solar website at <http://www.everest-solarsystems.com/>

INSTALLATION OF EVERFLASH qCOMP + SLIDE KIT: STEP BY STEP

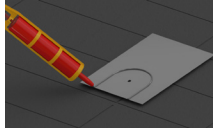


1 of 7

PREPARE ROOF FOR EVERFLASH qCOMP

Locate the rafters and snap horizontal and vertical lines (measured according to CrossRail Shared Rail Assembly Instructions) to mark the installation position for each EverFlash qComp flashing.

Materials Required: Measuring tape, string line

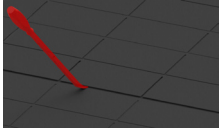


5 of 7

OPTIONAL: APPLY SEALANT TO UNDERSIDE OF FLASHING

Apply an upside-down U-shape bead of sealant to the underside of the flashing before insertion.

Materials Required: EverFlash qComp flashing, appropriate sealant



2 of 7

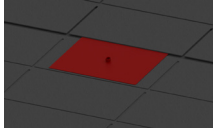
USE ROOFING BAR TO BREAK SEALS

It is important to remove any obstructing nails in the 2nd course of shingles as they can prevent the flashing from extending up under the 3rd course of shingles.

This is required by the roofing manufacturer's instructions and warranties, and the Asphalt Roofing Manufacturer's Association guidelines.

Use roofing bar to break the seals between the 1st and 2nd, and 2nd and 3rd shingle courses. Be sure to remove all nails to allow correct placement of flashing.

Materials Required: Roofing bar



6 of 7

INSERT EVERFLASH qCOMP FLASHING

Slide the qComp flashing under the 2nd course of shingles so that the bottom flashing edge does not overhang the butt edge of the shingles. This requirement ensures that the flashing extends up under the 3rd course of shingles and the minimum head-lap is achieved.

Materials Required: EverFlash qComp flashing



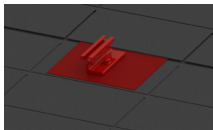
3 of 7

DRILL A PILOT HOLE INTO RAFTER

Drill a 3" deep pilot hole by drilling square to the rafter using a 7/32" aircraft extension bit.

If the pilot is severely out of square, the roof sealing washer may not compress consistently and the seal may be compromised.

Materials Required: 7/32" aircraft extension drill bit, drill



7 of 7

SWIVEL SLIDE KIT WHILE TORQUING LAG BOLT

Swivel the Slide Kit to gauge proper torque when driving the lag bolt. Tighten until the Slide Kit stops swiveling easily.

Torque: The range is between 8.3-11.6 ft-lb depending on the type of wood and time of year. If using an impact wrench to install the fasteners, be careful not to over-torque the fastener. You may need to stop and use a ratchet to finish the install.

Note: We recommend the use of the Slide Kit for a CrossRail Shared Rail system to adjust rail alignment during module installation. **Refer to CrossRail Shared Rail Assembly Instructions to finish system install.**

Materials Required: EverFlash qComp Kit, Slide Kit, drill, 1/2" socket, torque wrench



4 of 7

FILL PILOT HOLE WITH APPROPRIATE SEALANT

Filling the pilot hole with sealant is a secondary waterproofing step, which is required by the roofing manufacturers.

Materials Required: Appropriate sealant

Ready!

THANK YOU FOR CHOOSING AN EVEREST SOLAR SYSTEMS MOUNTING SYSTEM.

The EverFlash + Slide Kit is simple and fast to install. Please contact us for further assistance:

SERVICE-HOTLINE +1.760.301.5300

Everest Solar Systems, LLC
3809 Ocean Ranch Blvd.

Suite 111

Oceanside, CA 92056

Tel. +1.760.301.5300

info@everest-solarsystems.com

www.everest-solarsystems.com

EverFlash qComp + Slide Kit Quick Guide US1-0317
Product images are for illustrative purposes only. Specifications are subject to change without notice. All sales of our products shall be subject to Everest Solar Systems terms and conditions, including the exclusive limited warranty set forth therein.