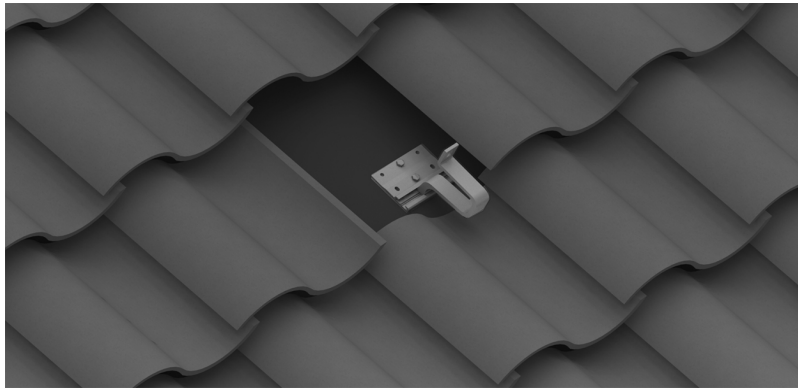


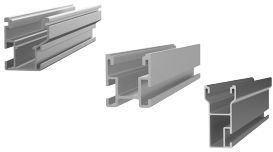
Mounting systems for solar technology



SingleHook for Tile Roofs:

- ▶ UL 2703 Listed for bonding and fire with CrossRail System
- ▶ Fast, simple installation with minimal components
- ▶ Eliminates the L-Foot and hardware
- ▶ Compatible with CrossRail System
- ▶ Fits most curved S tile roof
- ▶ Slotted hole allows flexibility in elevation of rail

EVEREST SOLAR SYSTEMS SINGLEHOOK



CrossRail 48-5/48/80
Material: Aluminum



SingleHook
Material: Aluminum
Hardware: Stainless Steel

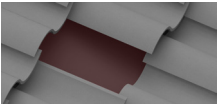
TOOLS REQUIRED

- ▶ Torque wrench (0 – 50 lb-ft)
- ▶ Cordless Drill (non-impact)
- ▶ 15mm Deep Socket
- ▶ 1/2" Socket (for lag bolt)
- ▶ Measuring Tape
- ▶ String Line

TORQUE SPECIFICATIONS

- ▶ M10 T-Bolts: 25.8 lb-ft (35 Nm)

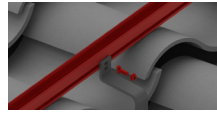
INSTALLATION OF SINGLEHOOK: STEP BY STEP



1
of 4

REMOVE TILES AND LOCATE RAFTERS

The tiles located directly above the rafter that the roof fastener will be installed must be removed.



4
of 4

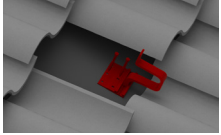
INSTALL CROSSRAIL

Insert the T-Bolt through the slot in the SingleHook and into the side channel of CrossRail.

Turn the T-Bolt clockwise ensuring that the mark at the end of the shaft is vertical, indicating proper alignment.

Attach the M10 Serrated Hex Nut and tighten to 25.8 lb-ft (35 Nm). Double check that the alignment marking on the end of the T-Bolt shaft is vertical to ensure it is properly engaged.

Refer to CrossRail Assembly Instructions for more detail on proper rail installation.



2
of 4

ASSEMBLE AND INSTALL SINGLEHOOK

The roof fastener must be mounted with a minimum of two stainless steel lag bolts in the wooden rafters (at least one screw per row of holes). Choosing the dimensions and position of the screws must be carried out per the applicable regulations.

Align the SingleHook Base to allow the SingleHook to rest in the desired location. Ensure that the base of the hook does not extend past the edge of the SingleHook Base.

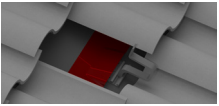
The SingleHook shall be installed so there is a minimum gap of 3/16 inch (5 mm) between the hook and tile.

Note: The amount of SingleHooks to be installed is dependent on the roof requirements and shall be specified when the order is placed.

Materials Required: 1/2 inch socket (for lag bolts), SingleHook Base, SingleHook

Ready!

THANK YOU FOR CHOOSING AN EVEREST SOLAR SYSTEMS MOUNTING SYSTEM.



3
of 4

OPTIONAL: ATTACH ROOF FLASHING

For jurisdictions that require flashing to prevent water infiltration, consult a qualified professional for the proper installation of flashing around the SingleHook Base.

Materials Required: Tile hook flashing

The SingleHook is simple and fast to install. Please contact us for further assistance:

SERVICE-HOTLINE +1.760.301.5300

Everest Solar Systems, LLC
3809 Ocean Ranch Blvd.
Suite 111
Oceanside, CA 92056
Tel. +1.760.301.5300
info@everest-solarsystems.com
www.everest-solarsystems.com

SingleHook Quick Guide US4-0317

Product images are for illustrative purposes only. Specifications are subject to change without notice. All sales of our products shall be subject to Everest Solar Systems terms and conditions, including the exclusive limited warranty set forth therein.