

## QUICK GUIDE STANDING SEAM POWERCLAMP



**PowerClamp**  
Material: aluminum  
Finish: mill



**M8 Hex Bolt**  
Material: aluminum



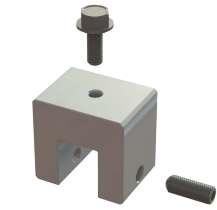
**CrossRail End Clamp Set**  
30 - 50 mm  
Material: stainless steel  
Finish: silver, dark



### **PowerClamp**

- ▶ High quality, German engineering
- ▶ Fast, simple installation

## ASSEMBLY: STEP BY STEP



1  
of 4

### MEASURE

Measure the distance from the eave to the first row and use a string line over the roof panel seams to establish a straight guideline for installation.

Materials required: Tape measure, string line

2  
of 4

### ALIGN

Align the Standing Seam PowerClamp on the seam exactly as shown in the orientation on the left side of this page, depending on the applicable seam profile.

3  
of 4

### SET

Set the single Set Screw located at the bottom of the clamp. The torque should be verified with a calibrate torque wrench.

Materials required: Set Screw, Torque Wrench

4  
of 4

### VERIFY SECURITY

Verify that the Standing Seam PowerClamp is secure, straight and level, then repeat steps 1-3 for remaining clamps in the module array. Be sure to follow the architect's and/or engineer's required spacing and/or layout, including their adjustments for field conditions, if any. (A recommended layout is furnished by Solar Connections International, Inc. only upon written request).