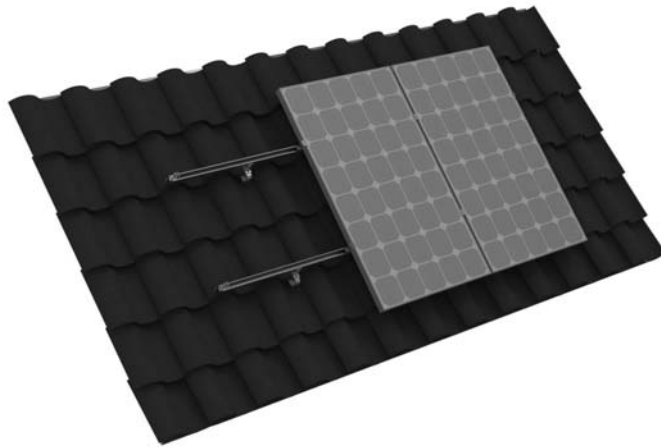


Mounting systems for solar technology

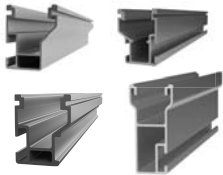


3S Tile Hook for Tile Roofs:

- ▶ Fast, simple installation with minimal components
- ▶ Minimal component count
- ▶ Compatible with CrossRail System
- ▶ Fits most curved S tile roof
- ▶ Wide base allows East/West Flexibility
- ▶ Base allows flexibility in elevation of rail

QUICK GUIDE Tile Hook 3S

4001294 Tile Hook 3S Wide Base w/Hardware



CrossRail 48-X/48-XL/80
Material: Aluminum



3S Tile Hook
Material: Aluminum
Hardware: Stainless Steel



L-Foot
Material: Aluminum
Hardware: Stainless Steel

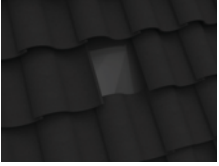
TOOLS REQUIRED

- ▶ Torque wrench (0 – 50 lb-ft)
- ▶ Cordless Drill (non-impact)
- ▶ 15mm Deep Socket
- ▶ 1/2" Socket (for lag bolt)
- ▶ Measuring Tape
- ▶ String Line

TORQUE SPECIFICATIONS

- ▶ M8 Bolts: 10.3 ft-lb (14 Nm)
- ▶ M10 T-Bolts: 25.8 lb-ft (35 Nm)
- ▶ Allen Bolts: 11.8 ft-lb (16 Nm)

INSTALLATION OF 3S TILE HOOK: STEP BY STEP



1
of 4

REMOVE TILES AND LOCATE RAFTERS

The tiles located directly above the rafter that the roof fastener will be installed must be removed.



3
of 4

ATTACH L-FOOT

Insert the M8 bolt through the L-Foot slot and into the threaded hole of the 3S Tile Hook. Ensure that the L-Foot is parallel to face of the 3S Tile Hook to insure proper alignment.

Torque M8 bolt to 10.3 ft-lb (14Nm).

Materials Required: L-Foot, M8 20 mm bolt



2
of 4

ASSEMBLE AND INSTALL 3S TILE HOOK

The roof fastener must be mounted with a minimum of two stainless steel lag bolts in the wooden rafters (at least one screw per row of holes). Choosing the dimensions and position of the screws must be carried out per the applicable regulations. This applies to on-roof insulation or counter lathing.

Horizontally align the roof hook hangers in order to get into the hollow of the tile. Loosen the Allen bolt in the bracket. After adjusting the bracket, torque the Allen bolt to 11.8 ft-lb (16Nm).

Ensure that the base of the Hook does not extend past the edge of the Base.

Flex deck tiles and lower tiles in the area of the hanger. The top edges of a horizontal row must be at the same height.

The roof fasteners must be mounted in such a way that there is a minimum spacing of 5 mm between the roof fastener bracket and the tile.

Note: The amount of 3S Tile Hooks to be installed is dependent on the roof requirements and shall be specified when the order is placed.

Optional: Attach roof flashing

For jurisdictions that require flashing to prevent water infiltration, consult a qualified professional for the proper installation of flashing around the 3S Tile Hook Base.

Materials Required: 1/2 inch socket (for lag bolts), 3S Tile Hook and Base



4
of 4

INSTALL CROSSRAIL

Insert the T-Bolt through the L-Foot slot and into the side channel of CrossRail.

Turn the T-Bolt clockwise ensuring that the mark at the end of the shaft is vertical, indicating proper alignment.

Attach the M10 Serrated Hex Nut and tighten to 25.8 lb-ft (35 Nm). Double check that the alignment marking on the end of the T-Bolt shaft is vertical to ensure it is properly engaged.

Due to thermal expansion, we recommend placing a gap of 1.25" - 2" (3-5 cm) every 65 ft (20 m) between rails. Maximum allowable spacing between thermal expansion gaps shall not exceed 80 ft (24.4 m).

Refer to CrossRail Assembly Instructions for more detail on proper rail installation.

Materials Required: CrossRail, M10 T-Bolt (use Bonding T-Bolts for dark rail), M10 Serrated hex nut



Ready!

THANK YOU FOR CHOOSING AN EVEREST SOLAR SYSTEMS MOUNTING SYSTEM.