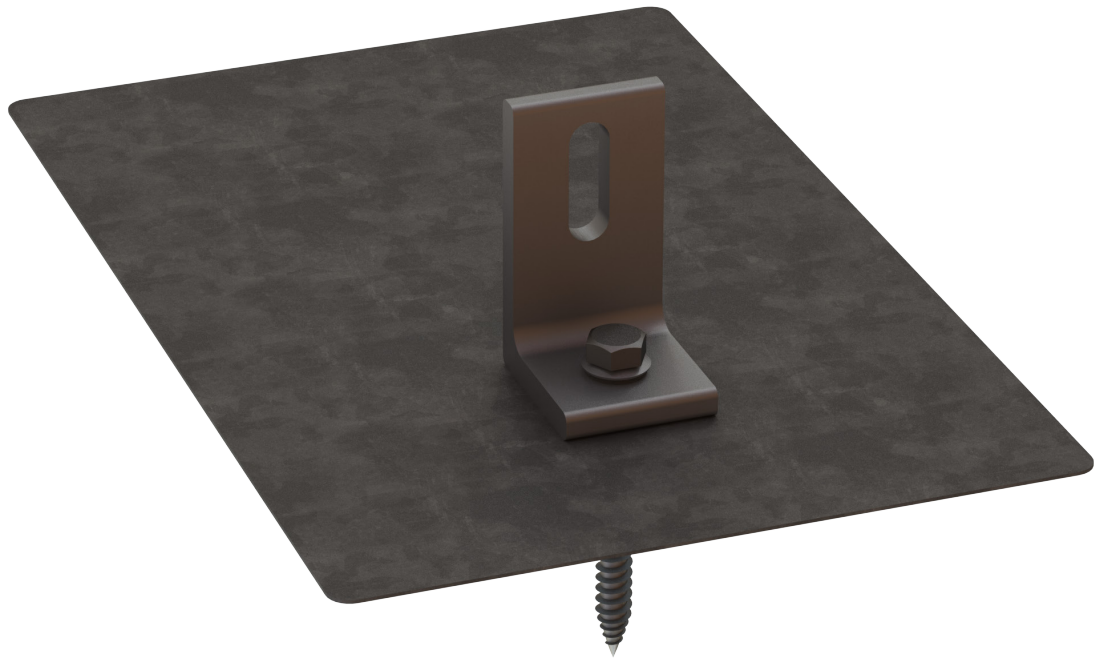




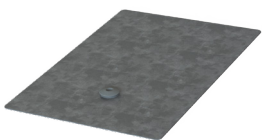
# EverFlash eComp Kit



- ▶ High quality, patented design to ensure watertight seal
- ▶ Included as part of a UL 2703 Listed System
- ▶ Easy installation, can be retrofitted without removing shingles
- ▶ Meets or exceeds all known building codes
- ▶ Aluminum base with stainless steel hardware for high corrosion resistance
- ▶ Compatible with all our CrossRails



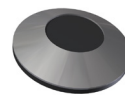
## Components



**EverFlash eComp, 8x12"**  
▶ Material: aluminum  
▶ Finish: silver, black



**L-Foot and Hardware**  
▶ Material: aluminum and stainless steel  
▶ Finish: mill, dark



**5/16" Sealing Washer**  
▶ Material: stainless steel, EPDM insert



**5/16" Lag Bolt**  
▶ Material: stainless steel