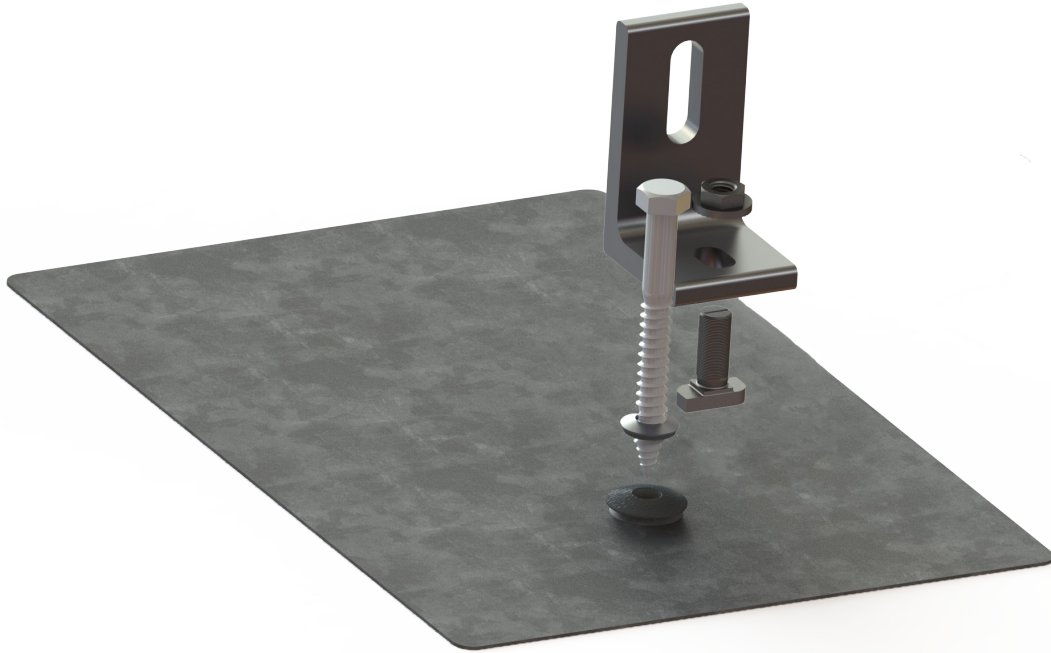




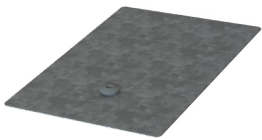
# EverFlash eComp Kit



- ▶ High quality, patented design to ensure watertight seal
- ▶ Included as part of a UL 2703 Listed System
- ▶ Easy installation, can be retrofitted without removing shingles
- ▶ Meets or exceeds all known building codes
- ▶ Aluminum base with stainless steel hardware for high corrosion resistance
- ▶ Compatible with all our CrossRails



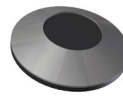
## Components



- EverFlash eComp, 8x12"**
- ▶ Material: aluminum
  - ▶ Finish: silver, black



- L-Foot and Hardware**
- ▶ Material: aluminum and stainless steel
  - ▶ Finish: mill, dark



- 5/16" Sealing Washer**
- ▶ Material: stainless steel, EPDM insert



- 5/16" Lag Bolt**
- ▶ Material: stainless steel