

QUICK GUIDE

Yeti Clamp

Note: The Yeti Clamp must be installed in an array. It cannot be installed on a single module that is not connected to the array by a mid clamp.

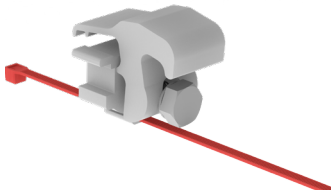
Materials Required:



Yeti Clamp

| 4000050-H

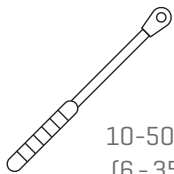
Material: Aluminum with stainless steel hardware



Optional: Leash

Recommended Material: Zip or Solar Tie [<1.50 mm thick]

TOOLS REQUIRED



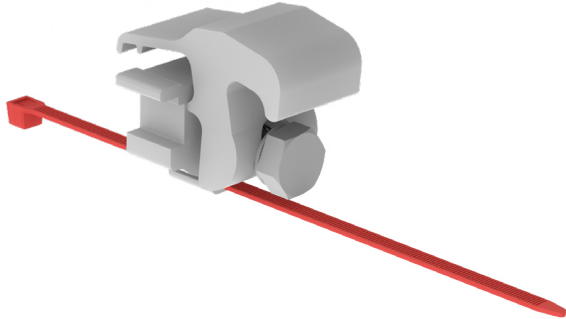
10-50 ft-lb
[6 - 35 Nm]



13 mm deep socket
▶ Torque 11.8 ft-lbs

Assembly

1 ATTACH LEASH

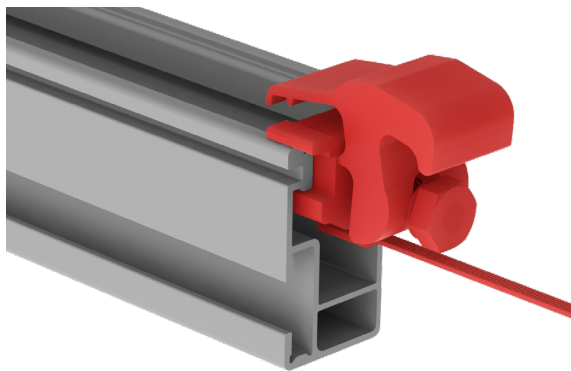


The Yeti Clamp comes preassembled and ready to install.

Push the zip tie up into the leash channel located at the bottom of the Yeti Clamp.

The zip tie is used as an optional leash. It is not required, but acts as an installation aid.

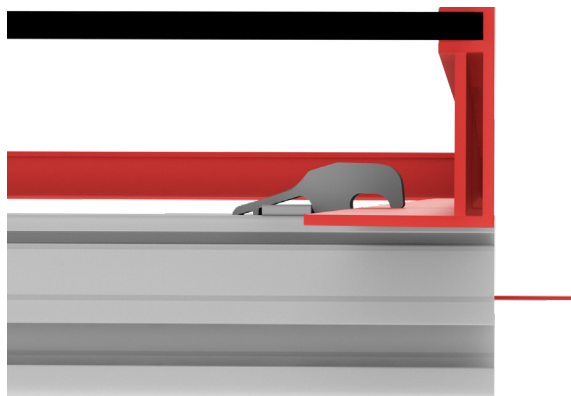
2 SLIDE CLAMP INTO RAIL



With the leash installed, slide the clamp into the rail channel with the bolt facing outward.

Slide the clamp into the rail leaving enough room for the module to be placed.

3 ENGAGE THE CLAMP

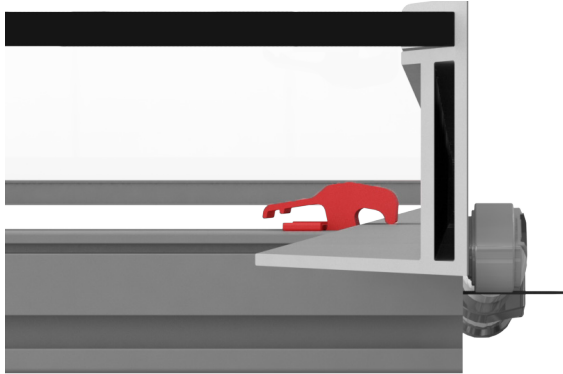


Place the module flush to the end of the rail.

Pull the leash toward you so that the clamp slides over the module frame.



4 TIGHTEN CLAMP

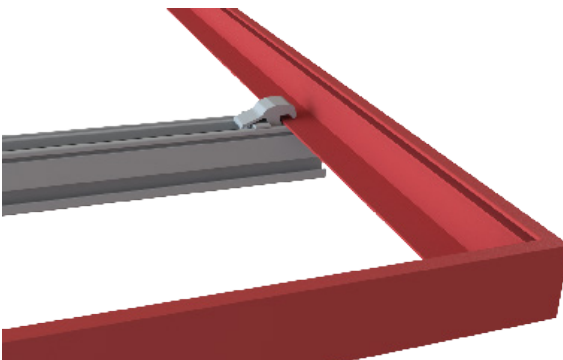


Using a torque wrench or standard drill with an HW6 Allen Drive, pull the clamp towards you and tighten the bolt.

Do not use an impact drill.

Torque: 12 ft-lbs

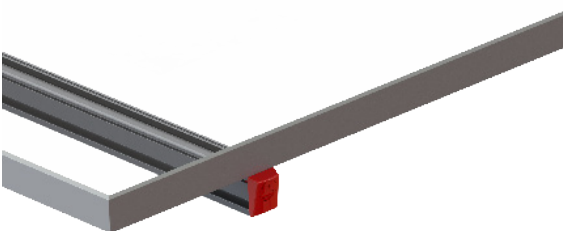
5 ENSURE SECURITY



Be sure that the module is properly fastened with the Yeti Clamp.

The inside edge of the module frame flange must be fully engaged with the Yeti Clamp as shown in the image.

6 ATTACH END CAP



Install end cap to create a flush, clean look!